

Programmable Terminal NA-series

Practices Guide NJ/NX Troubleshooter For the Elementary Level

NA5-15W□□□□

NA5-12W□□□□

NA5-9W□□□□

NA5-7W□□□□



Practices
Guide

■ Introduction

This guide provides reference information on editing pages of the NA. It does not provide safety information.

Be sure to obtain the NA-series Programmable Terminal User's Manuals, read and understand the safety points and other information required for use, and test sufficiently before actually using the equipment.

- (1) All rights reserved. No part of this publication may be reproduced, stored in a retrieval system, or transmitted, in any form, or by any means, mechanical, electronic, photocopying, recording, or otherwise, without the prior written permission of OMRON.
- (2) No patent liability is assumed with respect to the use of the information contained herein. Moreover, because OMRON is constantly striving to improve its high-quality products, the information contained in this manual is subject to change without notice. Every precaution has been taken in the preparation of this manual. Nevertheless, OMRON assumes no responsibility for errors or omissions. Neither is any liability assumed for damages resulting from the use of the information contained in this publication.
- (3) Trademarks
 - Sysmac and SYSMAC are trademarks or registered trademarks of OMRON Corporation in Japan and other countries for OMRON factory automation products.
 - Windows, Visual Basic, and Excel are either registered trademarks or trademarks of Microsoft Corporation in the United States, Japan, and other countries.
 - Other company names and product names in this document are the trademarks or registered trademarks of their respective companies.
 - Microsoft product screen shots reprinted with permission from Microsoft Corporation.
 - The product pictures and drawings contained in this document are the graphical images, which may be different from the actual articles.

Terms and Conditions Agreement

Warranty, Limitations of Liability

Warranties

Exclusive Warranty

Omron's exclusive warranty is that the Products will be free from defects in materials and workmanship for a period of twelve months from the date of sale by Omron (or such other period expressed in writing by Omron). Omron disclaims all other warranties, express or implied.

Limitations

OMRON MAKES NO WARRANTY OR REPRESENTATION, EXPRESS OR IMPLIED, ABOUT NON-INFRINGEMENT, MERCHANTABILITY OR FITNESS FOR A PARTICULAR PURPOSE OF THE PRODUCTS. BUYER ACKNOWLEDGES THAT IT ALONE HAS DETERMINED THAT THE PRODUCTS WILL SUITABLY MEET THE REQUIREMENTS OF THEIR INTENDED USE.

Omron further disclaims all warranties and responsibility of any type for claims or expenses based on infringement by the Products or otherwise of any intellectual property right.

Buyer Remedy

Omron's sole obligation hereunder shall be, at Omron's election, to (i) replace (in the form originally shipped with Buyer responsible for labor charges for removal or replacement thereof) the non-complying Product, (ii) repair the non-complying Product, or (iii) repay or credit Buyer an amount equal to the purchase price of the non-complying Product; provided that in no event shall Omron be responsible for warranty, repair, indemnity or any other claims or expenses regarding the Products unless Omron's analysis confirms that the Products were properly handled, stored, installed and maintained and not subject to contamination, abuse, misuse or inappropriate modification. Return of any Products by Buyer must be approved in writing by Omron before shipment. Omron Companies shall not be liable for the suitability or unsuitability or the results from the use of Products in combination with any electrical or electronic components, circuits, system assemblies or any other materials or substances or environments. Any advice, recommendations or information given orally or in writing, are not to be construed as an amendment or addition to the above warranty.

See <http://www.omron.com/global/> or contact your Omron representative for published information.

Limitation on Liability; Etc

OMRON COMPANIES SHALL NOT BE LIABLE FOR SPECIAL, INDIRECT, INCIDENTAL, OR CONSEQUENTIAL DAMAGES, LOSS OF PROFITS OR PRODUCTION OR COMMERCIAL LOSS IN ANY WAY CONNECTED WITH THE PRODUCTS, WHETHER SUCH CLAIM IS BASED IN CONTRACT, WARRANTY, NEGLIGENCE OR STRICT LIABILITY.

Further, in no event shall liability of Omron Companies exceed the individual price of the Product on which liability is asserted.

Application Considerations

Suitability of Use

Omron Companies shall not be responsible for conformity with any standards, codes or regulations which apply to the combination of the Product in the Buyer's application or use of the Product. At Buyer's request, Omron will provide applicable third party certification documents identifying ratings and limitations of use which apply to the Product. This information by itself is not sufficient for a complete determination of the suitability of the Product in combination with the end product, machine, system, or other application or use. Buyer shall be solely responsible for determining appropriateness of the particular Product with respect to Buyer's application, product or system. Buyer shall take application responsibility in all cases.

NEVER USE THE PRODUCT FOR AN APPLICATION INVOLVING SERIOUS RISK TO LIFE OR PROPERTY WITHOUT ENSURING THAT THE SYSTEM AS A WHOLE HAS BEEN DESIGNED TO ADDRESS THE RISKS, AND THAT THE OMRON PRODUCT(S) IS PROPERLY RATED AND INSTALLED FOR THE INTENDED USE WITHIN THE OVERALL EQUIPMENT OR SYSTEM.

Programmable Products

Omron Companies shall not be responsible for the user's programming of a programmable Product, or any consequence thereof.

Disclaimers

Performance Data

Data presented in Omron Company websites, catalogs and other materials is provided as a guide for the user in determining suitability and does not constitute a warranty. It may represent the result of Omron's test conditions, and the user must correlate it to actual application requirements. Actual performance is subject to the Omron's Warranty and Limitations of Liability.

Change in Specifications

Product specifications and accessories may be changed at any time based on improvements and other reasons. It is our practice to change part numbers when published ratings or features are changed, or when significant construction changes are made. However, some specifications of the Product may be changed without any notice. When in doubt, special part numbers may be assigned to fix or establish key specifications for your application. Please consult with your Omron's representative at any time to confirm actual specifications of purchased Product.

Errors and Omissions

Information presented by Omron Companies has been checked and is believed to be accurate; however, no responsibility is assumed for clerical, typographical or proofreading errors or omissions.

Contents

Terms and Conditions Agreement.....	3
Warranty, Limitations of Liability	3
Application Considerations	4
Disclaimers	4
Related Manuals	6
1 Outline.....	7
2 NJ/NX-series Troubleshooter Functions	8
2-1 Controller Events and User Events	8
2-2 Active Events and Event Logs	8
2-3 Registering User Events	9
3 Description on Event Screens	11
3-1 Active Events.....	11
3-2 Event Logs	15
4 Procedure to Start Up the NJ/NX Troubleshooter	19
Revision History	20

Related Manuals

The following manuals are related to this manual.

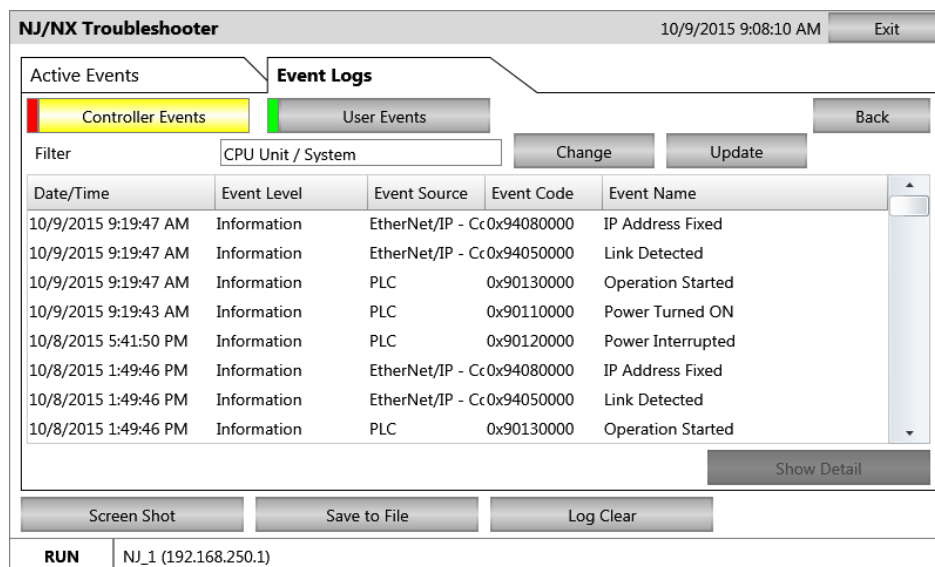
Cat.No.	Model	Manual Name
SBCA-362	SYSMAC-SE2□□□	Sysmac Studio Version 1 Operation Manual
SBSA-545	NA5-15W□□□□ NA5-12W□□□□ NA5-9W□□□□ NA5-7W□□□□	NA-series Programmable Terminal Hardware User's Manual
SBSA-546	NA5-15W□□□□ NA5-12W□□□□ NA5-9W□□□□ NA5-7W□□□□	NA-series Programmable Terminal Software User's Manual
SBSA-547	NA5-15W□□□□ NA5-12W□□□□ NA5-9W□□□□ NA5-7W□□□□	NA-series Programmable Terminal Device Connection User's Manual
SBSA-548	NA5-15W□□□□ NA5-12W□□□□ NA5-9W□□□□ NA5-7W□□□□	NA-series Programmable Terminal Startup Guide

1 Outline

The troubleshooter function displays on the NA unit the controller errors of the CPU or other units, with the use of the NJ/NX-series CPU unit's function to monitor errors.

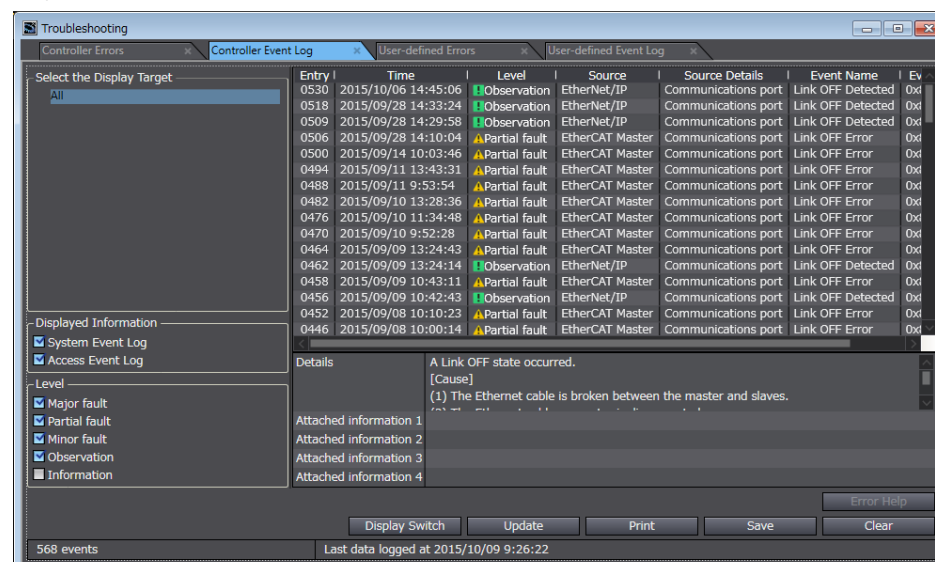
The troubleshooter screens are installed in the NA unit system. Thus, there is no need at all for the users to create the conventional alarm screens using the graphic tool (i.e. to perform the settings on Sysmac Studio) for NA. Moreover, the contents that are to be displayed as "User Events" are to be registered in advance in "Event Settings" in Sysmac Studio, which eliminates the need for setting alarms in the NA tool.

<NJ/NX Troubleshooter for NA>



Sysmac Studio also has the same troubleshoot function as that of the NA unit. Selecting [Tools]-[Troubleshooting...]-[Controller Event Log] displays the screen shown below.

<Sysmac Studio Troubleshooter>



2 NJ/NX-series Troubleshooter Functions

The troubleshooter function allows you to confirm the “user-defined errors” and “errors occurred in the controller or anywhere in the internal devices”, the contents of the event logs, and the countermeasures against the errors. This function is only available when connected to the NJ/NX-series controllers.

2-1 Controller Events and User Events

On the Troubleshooter screen, you can confirm the active events and event logs for the “Controller Events” as well as “User Events”.

1. User Events/User Event Logs

These are the errors and event logs that can be defined by the users with Sysmac Studio. The users can also specify detailed information such as countermeasures against troubles.

The errors caused by “instruction to cause a user error (SetAlarm)” or “instruction to generate user information (Setinfo)” are displayed on the NA unit.

Register the errors (events) to display in Sysmac Studio. (See next page.)

In and after NARuntime Ver.1.03, only for the user events, the detailed display can be switched to a previously prepared screen (the function equivalent to NS).

2. Controller Events/Controller Event Logs

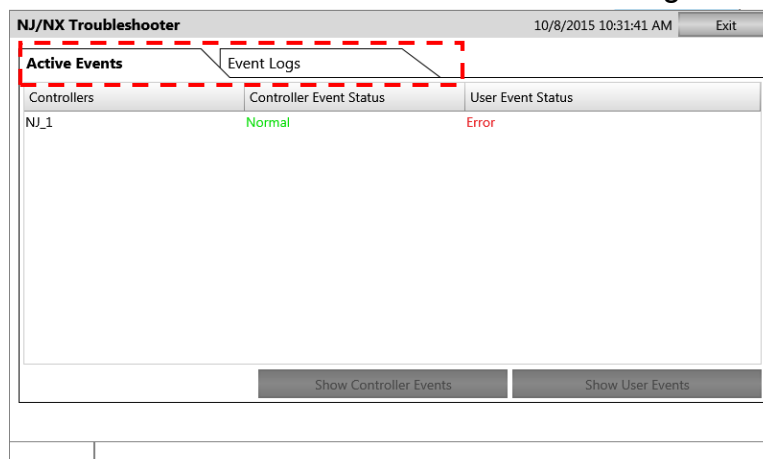
These are the fixed errors and event logs included in the NJ/NX-series controllers.

The users therefore cannot edit them.

The errors that occurred in the CPU units, NX-series slave terminals, EtherCAT slaves, CJ units, or other devices are to be reported from the controller to the NA.

2-2 Active Events and Event Logs

When you start up the NJ/NX Troubleshooter, the following screen appears. You can switch the display between “Active Events” and “Event Logs” by the tabs enclosed in the red dashed-line rectangle as shown below.

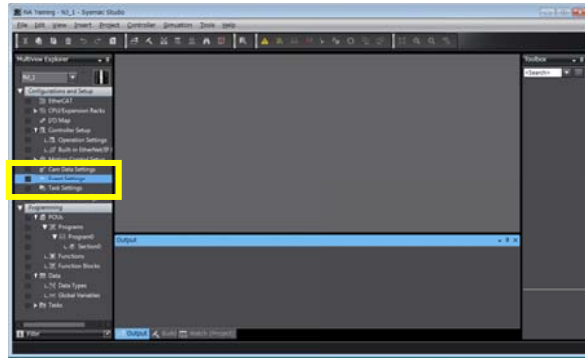


“Error” appears if there is an error. If there is no error, “Normal” appears.

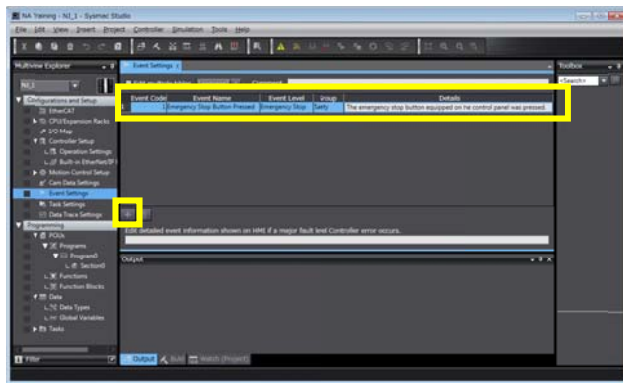
2-3 Registering User Events

Register the contents of the errors that are displayed on the User Events screen in the Sysmac Studio for the NJ/NX controller.

1. Select and double-click [Configurations and Setup]-[Event Settings]. Otherwise, right-click on it and select [Edit]. The “Event Settings” tab page opens.



2. Click the **+** icon at the left bottom of the tab page. Register the following data in the cells for “Event Code/Event Name/Event Level/Group/Details”.
 - Event Code: 1
 - Event Name: Emergency Stop Button Pressed
 - Event Level: Emergency Stop
 - Group: Safety
 - Details: The emergency stop button equipped on the control panel was pressed.

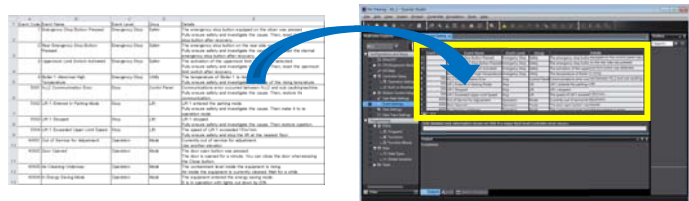


3. If you create an Excel file like the one shown on the right, you can directly copy and paste the contents to register them in “Event Settings”. Note: Do not copy the header of each column (i.e. Event Code, Event Name, etc.).

Reference: Excel “event.xlsx”

Event Code	Event Name	Event Level	Group	Details
1	Emergency Stop Button Pressed	Emergency Stop	Safety	The emergency stop button equipped on the silor was pressed. Fully ensure safety and investigate the cause. Then, reset the emergency stop button after recovery.
2	Clear Emergency Stop Button Pressed	Emergency Stop	Safety	The emergency stop button on the rear side was pressed. Fully ensure safety and investigate the cause. Then, reset the external emergency stop button after recovery.
3	Uppermost Limit Switch Activated	Emergency Stop	Safety	The activation of the uppermost limit switch was detected. Fully ensure safety and investigate the cause. Then, reset the uppermost limit switch after recovery.
4	Boiler 1 Abnormal High Temperature	Emergency Stop	Utility	The temperature of Boiler 1 is rising. Fully ensure safety and investigate the cause of the rising temperature.
1000	NJ2 Communication Error	Stop	Control Panel	Communications error occurred between NJ2 and sub crawling machine. Fully ensure safety and investigate the cause. Then, restore the communication.
1000	LIFT 1 Entered in Parking Mode	Stop	LIFT	LIFT 1 entered the parking mode. Fully ensure safety and investigate the cause. Then make it to the operation mode.
1000	LIFT 1 Stopped	Stop	LIFT	LIFT 1 stopped. Fully ensure safety and investigate the cause. Then restore operation.
1004	LIFT 1 Exceeded Upper Limit Speed	Stop	LIFT	The speed of LIFT 1 exceeded 15m/min. Fully ensure safety and stop the lift at the nearest floor.
4000	Out of Service for Adjustment	Operation	Mode	Currently out of service for adjustment. Use another elevator.
4000	Door Opened	Operation	Mode	The door open button was pressed. The door is opened for a minute. You can close the door when pressing the Close button.
4000	Air Clearing Underway	Operation	Mode	The contaminant level inside the equipment is rising. If inside the equipment is currently cleared, wait for a while.
4004	In Energy Saving Mode	Operation	Mode	The equipment entered the energy saving mode. It is in operation with lights out alarm by 20%.

4. Copy the contents of the Excel file and paste them in “Event Settings”.

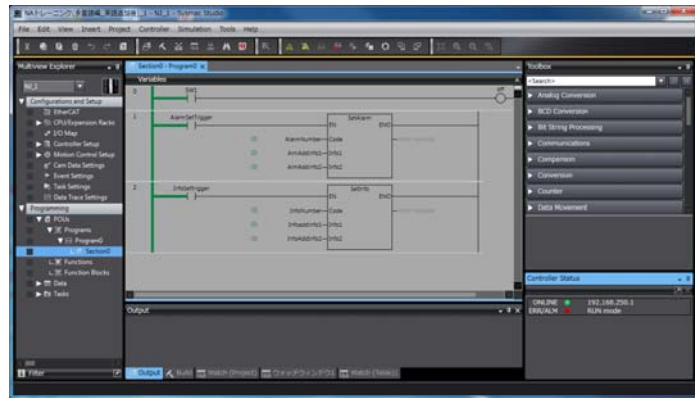


5. The contents of the Excel file are now pasted in “Event Settings”.

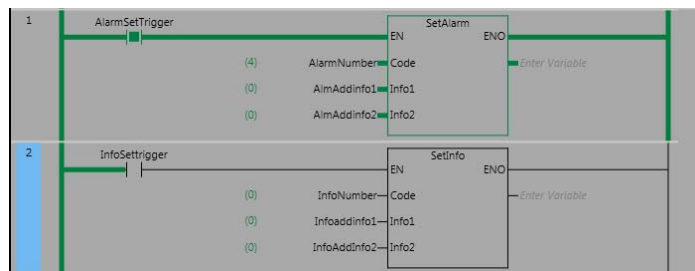
Event Code	Event Name	Event Level	Group	Details
1	Emergency Stop Button Pressed	Emergency Stop	Safety	The emergency stop button equipped on the slicer was pressed.
2	Rear Emergency Stop Button Pressed	Emergency Stop	Safety	The emergency stop button on the rear side was pressed.
3	Uppermost Limit Switch Activated	Emergency Stop	Safety	The activation of the uppermost limit switch was detected.
4	Slicer 1 Abnormal High Temperature	Emergency Stop	Safety	The temperature of Slicer 1 is rising.
5	50001 NU 2 Communication Error	Stop	Control Panel	Communications error occurred between NU_2 and sub caulking machine.
6	50002 Lift 1 Entered in Parking Mode	Stop	Lift	Lift 1 entered the parking mode.
7	50003 Lift 1 Stopped	Stop	Lift	Lift 1 stopped.
8	50004 Lift 1 Exceeded Upper Limit Speed	Stop	Lift	The speed of Lift 1 exceeded 15m/min.
9	40000 Out of Service for Adjustment	Operation	Mode	Currently out of service for adjustment.
10	40002 Door Opened	Operation	Mode	The door open button was pressed.
11	40003 Air Cleaning Underway	Operation	Mode	The contaminant level inside the equipment is rising.
12	40004 In Energy Saving Mode	Operation	Mode	The equipment entered the energy saving mode.

6. Activate “the instruction to cause a user error (SetAlarm)” or “the instruction to generate user information (SetInfo)” to cause a user event.

Reference project:
NA_Trouble.smc2



7. Enter the “Event Code” number that is set in “Event Settings” in “AlarmNumber” or “InfoNumber”, and set “AlarmSetTrigger” or “InfoSetTrigger” to True. The corresponding error appears on the NA.



3 Description on Event Screens

3-1 Active Events

Displays the currently raised “Controller Events” and “User Events”.

“Error” appears when an error has occurred.

“Normal” is displayed in the normal status.

The screenshot shows the 'NJ/NX Troubleshooter' window. At the top, there is a title bar with the text 'NJ/NX Troubleshooter', a timestamp '10/23/2015 6:05:44 AM', and an 'Exit' button. Below the title bar, there are two tabs: 'Active Events' (selected) and 'Event Logs'. The 'Active Events' tab contains a table with three columns: 'Controllers', 'Controller Event Status', and 'User Event Status'. The table has one row with the controller 'NJ_1', a status of 'Error' (in red), and a status of 'Normal' (in green). Below the table, there are two buttons: 'Show Controller Events' and 'Show User Events', both of which are highlighted with a red rectangular border. At the bottom of the window, there is a status bar with the text 'RUN' and 'NJ_1 (192.168.250.1)'.

Controllers	Controller Event Status	User Event Status
NJ_1	Error	Normal

Show Controller Events Show User Events

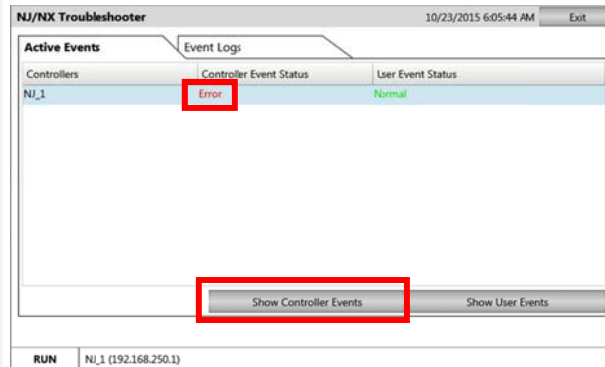
RUN NJ_1 (192.168.250.1)

To confirm the contents of the currently raised errors, select the controller (to highlight it light blue) and press either “Show Controller Events” or “Show User Events”.

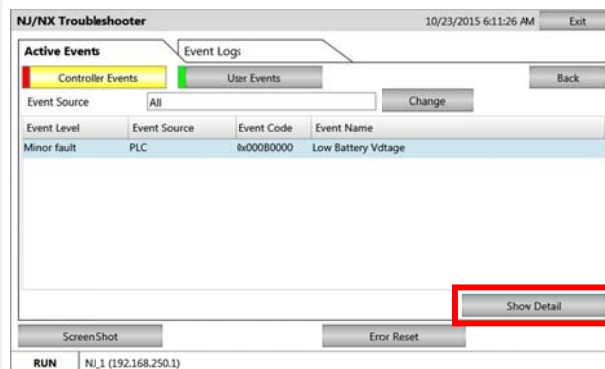
Active Events – Controller Events

When “Error” appears in the Controller Event Status column on the “Active Events” tab, it means that an error has occurred in the controller. Check for the currently occurring errors following the procedure below.

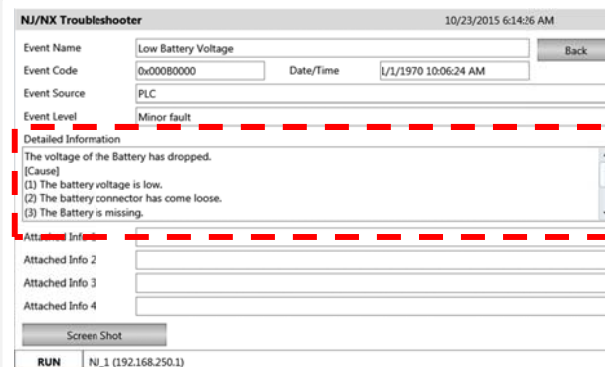
1. When “Error” is displayed in the Controller Event Status column on the “Active Events” tab, press the “Show Controller Events” button at the bottom of the screen.



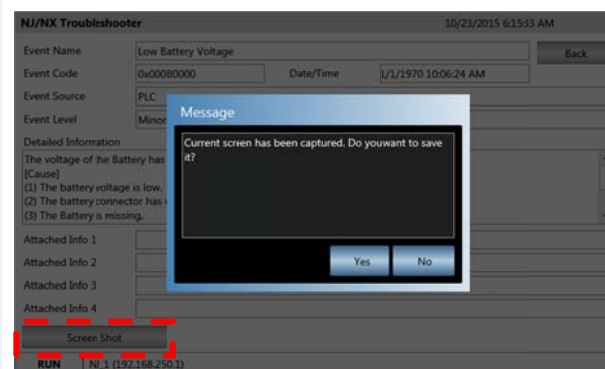
2. The screen is switched to “Controller Events”. A list of the currently occurring controller events is displayed. Select an event from the list and press “Show Detail” at the right bottom of the screen.



3. The details of the event that is selected in Step 2 appear. You can recover from the problem by referring to what is displayed in “Detailed Information”.



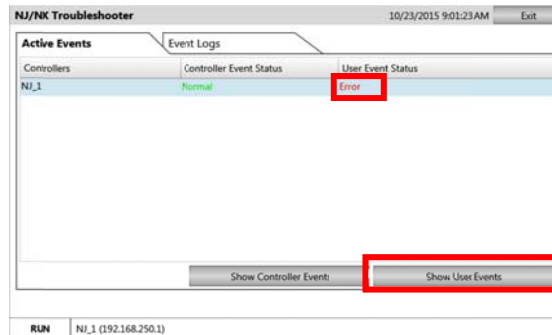
4. In Steps 2 and 3, if you press the “Screen Shot” button, the currently displayed screen can be captured and saved in an SD Memory Card. You can attach the saved image to defect reports. When no SD Memory Card is inserted in NA, if you press “Yes” in the dialog box shown on the right, the following message appears. “Failed to capture screenshot – Could not find the storage media ‘SDCard’.”



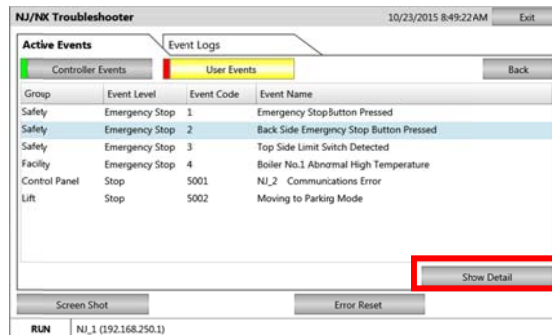
Active Events – User Events

When “Error” appears in the User Event Status column on the “Active Events” tab, it means that at least one of the errors created in Step 5 in Section 2-3 has occurred. Check for the currently occurring errors following the procedure below.

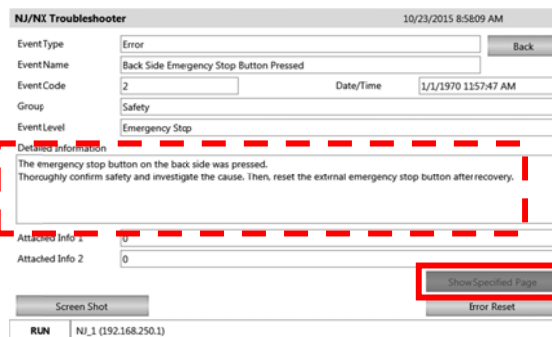
1. When “Error” is displayed in the User Event Status column on the “Active Events” tab, press the “Show User Events” button at the bottom of the screen.



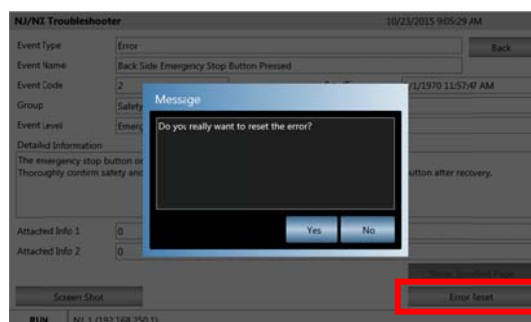
2. The screen is switched to “User Events”. A list of the currently occurring user events is displayed. Select an event from the list and press “Show Detail” at the right bottom of the screen.



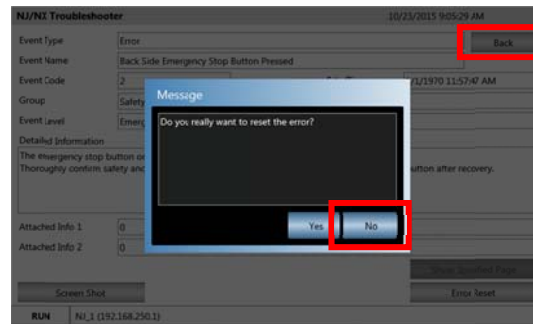
3. The details of the event that is selected in Step 2 appear. You can recover from the problem by referring to what is displayed in “Detailed Information”. Pressing the “Show Specified Page” button allows you to jump to the page that is created with Sysmac Studio and related to the trouble. For more details, refer to Steps 7 to 9 on Page 14.



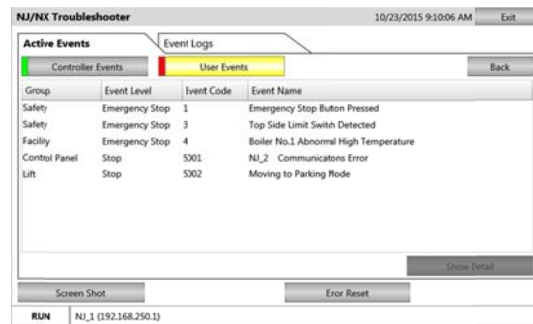
4. In cases of User Events, you can clear the currently occurring event by pressing the “Error Reset” button on the Troubleshooter screen. When you press the “Error Reset” button, the “Do you want to really reset the error?” message appears. Press “Yes”.



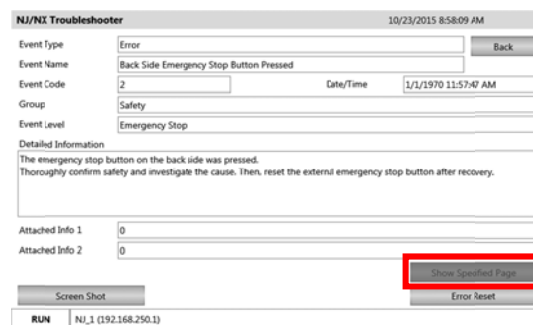
5. The “The error was reset successfully.” Message appears. Press “OK” and then “Back” at the top right of the screen.



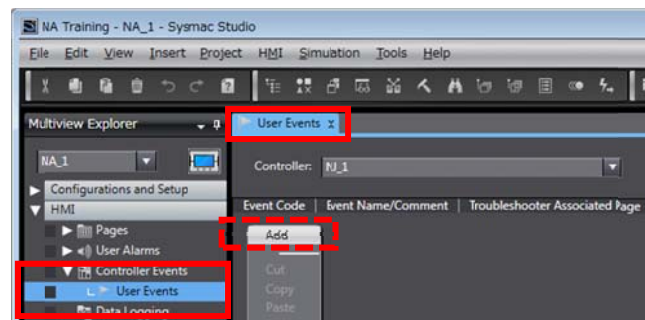
6. On the “Active Events” screen, you will find that the event you just cleared has been deleted.



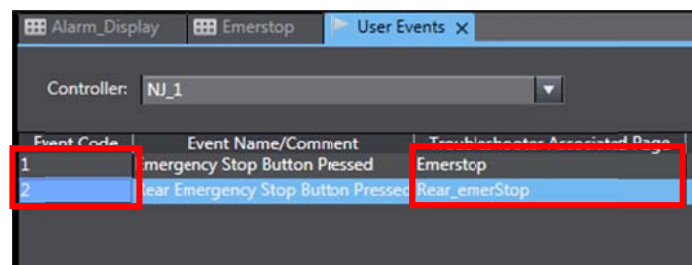
7. As described in Step 3, if you press the “Show Specified Page” button in the Details screen of the user event, the page created with Sysmac Studio can be displayed. You can specify the page from [HMI]-[Controller Events]-[User Events] on Sysmac Studio, as described in Step 8 below.



8. Specify the page related to the Troubleshooter as below. Select [HMI]-[Controller Events]-[User Events], and right-click on the edit pane of “User Events” and select [Add].



9. Add in [Event Code] the code of the event for which to display the related page, and enter in [Troubleshooter Associated Page] the name of the page to display. The [Event Code] represents the code that is assigned in [Event Settings] in Step 5 on Page 10.



With the settings shown on the right, when you press [Show Specified Page] on the User Events Details screen of Troubleshooter, the [Emerstop] page appears.

In [Event Name/Comment], the ones set in [Event Name] in Step 5 on Page 10 are automatically displayed.

3-2 Event Logs

Displays the “Controller Events” and “User Events” that have been raised so far.

“Yes” appears when the event log is not cleared.

“No” appears when it is cleared.

Controllers	Controller Event Status	User Event Status
NJ_1	No	Yes

Show Controller Events Show User Events

RUN NJ_1 (192.168.250.1)

To confirm the contents of the errors that have been raised so far, select the controller (to highlight it light blue) and press either “Show Controller Events” or “Show User Events”.

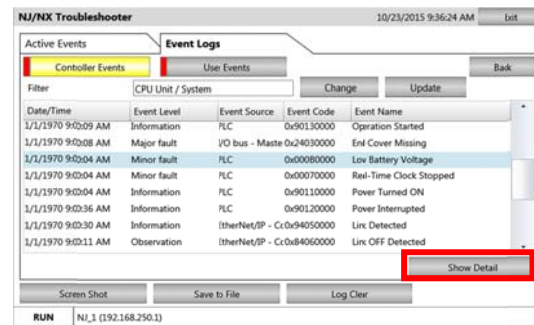
Event Logs – Controller Events

When “Yes” appears in the Controller Event Status column on the “Event Logs” tab, it means that there is a log of the errors that have occurred so far in the controller. Check for the log following the procedure below.

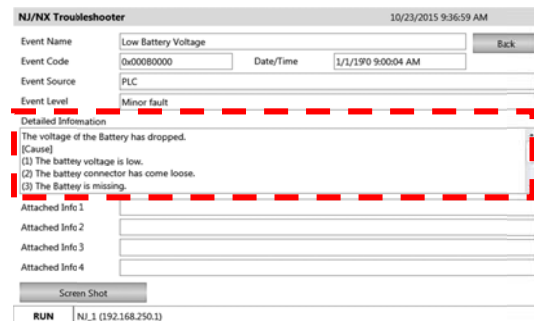
1. When “Yes” is displayed in the Controller Event Status column on the “Event Logs” tab, press the “Show Controller Events” button at the bottom of the screen.



2. The screen is switched to “Controller Events”. A list of the controller events that have occurred so far is displayed. Select an event from the list and press “Show Detail” at the right bottom of the screen.



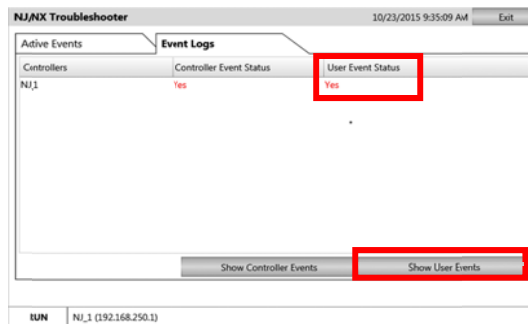
3. The details of the event that is selected in Step 2 appear. You can recover from the problem by referring to what is displayed in “Detailed Information”.



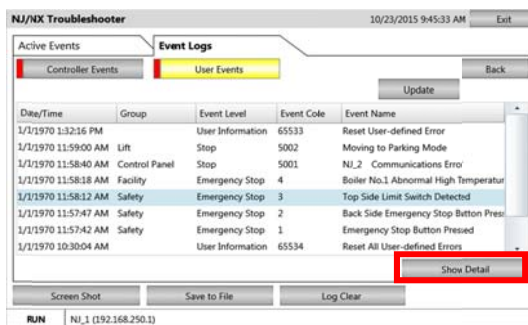
Event Logs – User Events

When “Yes” appears in the User Event Status column on the “Event Logs” tab, it means that there is a log of the errors created in Step 5 in Section 2-3 (on Page 10). Check for the log following the procedure below.

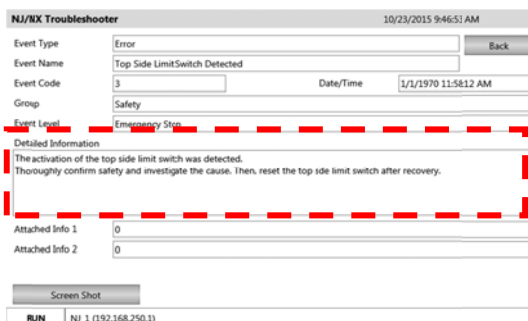
1. When “Yes” is displayed in the User Event Status column on the “Event Logs” tab, press the “Show User Events” button at the bottom of the screen.



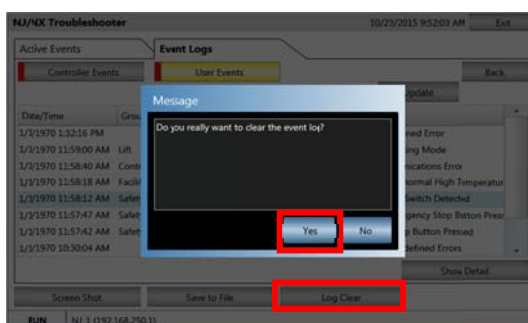
2. The screen is switched to “User Events”. A list of the user events that have occurred so far is displayed. Select an event from the list and press “Show Detail” at the right bottom of the screen.



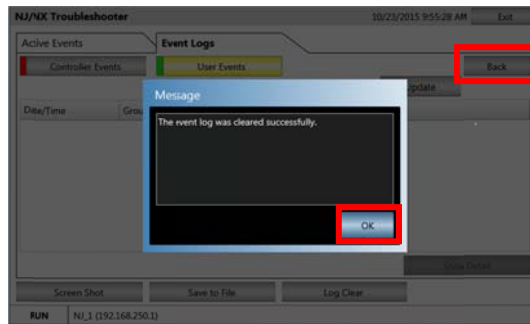
3. The details of the event that is selected in Step 2 appear. You can recover from the problem by referring to what is displayed in “Detailed Information”.



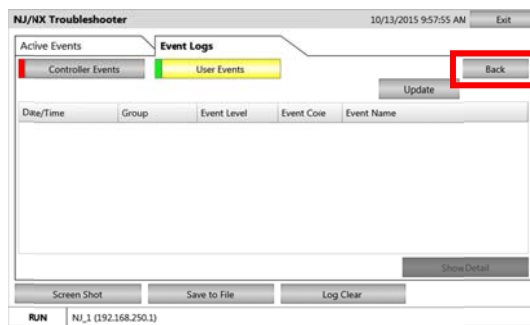
4. You can clear the event log by pressing the “Log Clear” button in the screen that shows the list of the user events described in Step 2. Pressing the button displays the “Do you really want to clear the event log?” message. Press “Yes”.



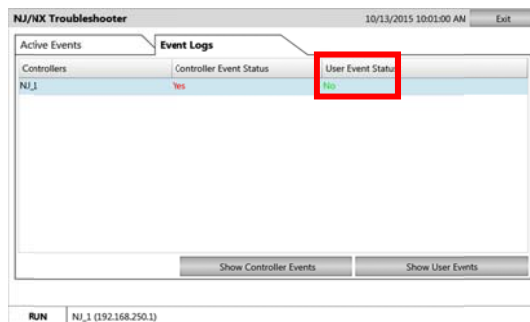
5. The “The event log was cleared successfully.” message appears. Press “OK” and then “Back” at the top right of the screen.



6. The “User Events” screen appears. You will find that the user event has been cleared. Press the “Back” button to show the “Event Logs” screen.



7. The “Yes” sign that appeared in the User Event Status column as described in Step 1 is now changed to “No”.



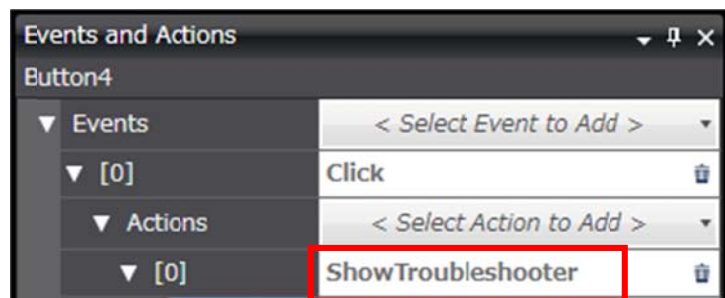
4 Procedure to Start Up the NJ/NX Troubleshooter

There are three methods to start up the NJ/NX Troubleshooter as described below.

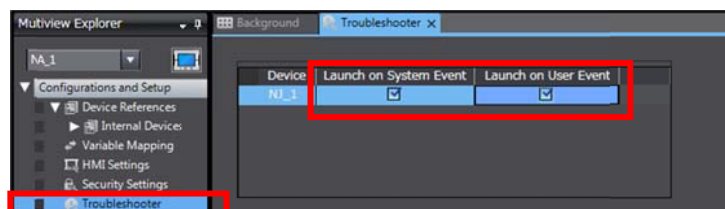
1. Select "NJ/NX Troubleshooter" from "Project System Menu".



2. Press the Button for which to have set "ShowTroubleshooter" as the action under [Events and Actions].



3. The troubleshooter can also be started if you have selected either "Launch on System Event" or "Launch on User Event" and when a corresponding event occurs.



Revision History

Revision code	Date	Revised content
01	October 2015	Original production

Note: Do not use this document to operate the Unit.

OMRON Corporation Industrial Automation Company
Tokyo, JAPAN

Contact: www.ia.omron.com

Regional Headquarters

OMRON EUROPE B.V.

Wegalaan 67-69, 2132 JD Hoofddorp
The Netherlands
Tel: (31)2356-81-300/Fax: (31)2356-81-388

OMRON ELECTRONICS LLC

2895 Greenspoint Parkway, Suite 200
Hoffman Estates, IL 60169 U.S.A
Tel: (1) 847-843-7900/Fax: (1) 847-843-7787

OMRON ASIA PACIFIC PTE. LTD.

No. 438A Alexandra Road # 05-05/08 (Lobby 2),
Alexandra Technopark,
Singapore 119967
Tel: (65) 6835-3011/Fax: (65) 6835-2711

OMRON (CHINA) CO., LTD.

Room 2211, Bank of China Tower,
200 Yin Cheng Zhong Road,
PuDong New Area, Shanghai, 200120, China
Tel: (86) 21-5037-2222/Fax: (86) 21-5037-2200

Authorized Distributor:

© OMRON Corporation 2015 All Rights Reserved.
In the interest of product improvement,
specifications are subject to change without notice.

Cat. No. V423-E1-01

1015 (1015)