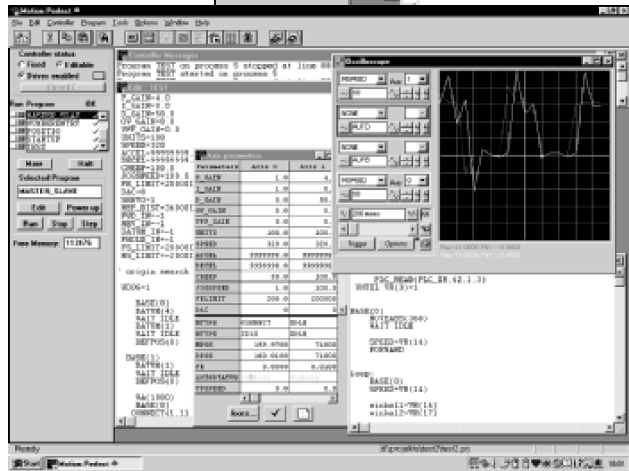
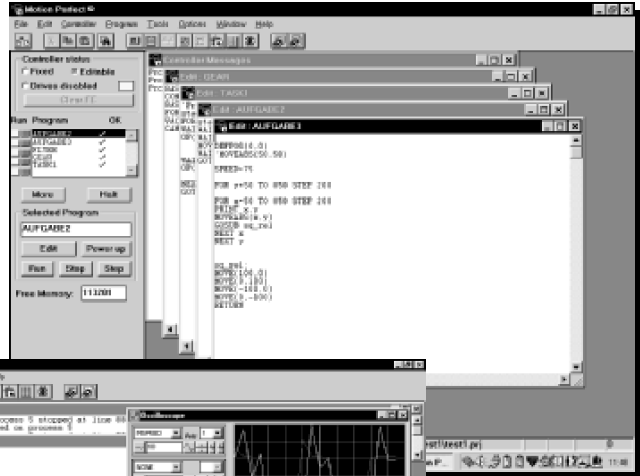


Programming Software for Advanced Motion Controllers

Motion Perfect

Software Tool for Programming, Configuring and Commissioning the Motion Controller units C200HW-MC402-E and R88A-MCW151-E.

- Programming is done in BASIC which has been supplemented with a powerful set of commands especially adapted for Motion Control requirements.
- A debugging function facilitates testing of created programs.
- The 4-channel software oscilloscope can be used to display signals such as rpm, position values, contour errors etc. With an additional software module the user can load traversing curves created with CAD programs in DXF format and convert them directly into a BASIC program code.
- All program steps can also be entered in a terminal window and tested online.
- Versatile test and monitor functions.



Software

Specifications

Functions

| | |
|--------------------------------------|--|
| System setting | Setting communication parameters |
| Data input | - Editing of general parameters, position data, ramp up/ramp down, speeds etc. - Programming of position algorithms in BASIC - Load, save, delete parameter files, position data etc. |
| Test options/Online operation | - Transfer and comparison of parameter data - Monitor mode to display the actual position of status information (e.g. input/output signals, errors) - Online recording of different axis parameters (e.g. speeds, ramps, positions etc.) |
| Tools | - Windows for axis parameters - Oscilloscope function - Program debugger - I/O status display - Jog mode facility for every axis |

Operating Environment

| | |
|-------------------------------|---|
| Operating systems | WINDOWS 95/98/ME/2000/NT4.0 (Service Pack 5) |
| Processor | Min. Pentium 150 MHz (200 MHz or higher recommended) |
| Memory requirements | Hard disk 10 MB free memory space RAM 16 MB min. |
| Screen | SVGA graphic or higher |
| Peripheral connections | CD-ROM drive, serial port |

Compatible Units

| | |
|-------------------------------------|---|
| | Specification |
| Supported Motion Controllers | C200HW-MC402 Unit, R88A-MCW151-E, R88A-MCW151-DRT-E |

Ordering Information

Software

| Description | Model |
|---|-----------------|
| Motion Perfect. Programming Monitoring and Debugging Software | MOTION TOOLS CD |

Cables

| Description | Model |
|---------------------------------------|-----------------|
| Serial cable to the Motion Controller | R88A-CCM002P4-E |

ALL DIMENSIONS SHOWN ARE IN MILLIMETERS.

To convert millimeters into inches, multiply by 0.03937. To convert grams into ounces, multiply by 0.03527.