

How to update or recover the system program Ver.3

Introduction

CDROM includes system program installation program to update or to recover your PT.

Please follow the instruction below **just in case when System Program Ver.3 is corrupted or if your System program in the PT is Ver2.x or earlier (Japanese version)**. (You can check your system version from System Menu-[Special Screen] Tab, System Version.) If your PT needs updating or recover system program, and the download is performed by the procedure other than the instruction below the system may not operate correctly.

This program can be used for NS12/10/7 so that the following operations are common to the all models.

NOTE

- **Do NOT use this program for the PT with -V1 at the end of the model number.**
- **All screen data stored in the PT will be deleted when this program is executed. Please make sure that the backup has been made before executing this program.**
- **The log stored in the PT will be deleted. Save it in a memory card if necessary, before executing this program.**

Contents

Introduction.....	1
1. Preparations Before Updating	2
2. Process for Updating the System Program	4
3. Confirmation after Updating.....	6
4. Troubleshooting.....	7
5. About Memory Cards.....	8

1. Preparations Before Updating

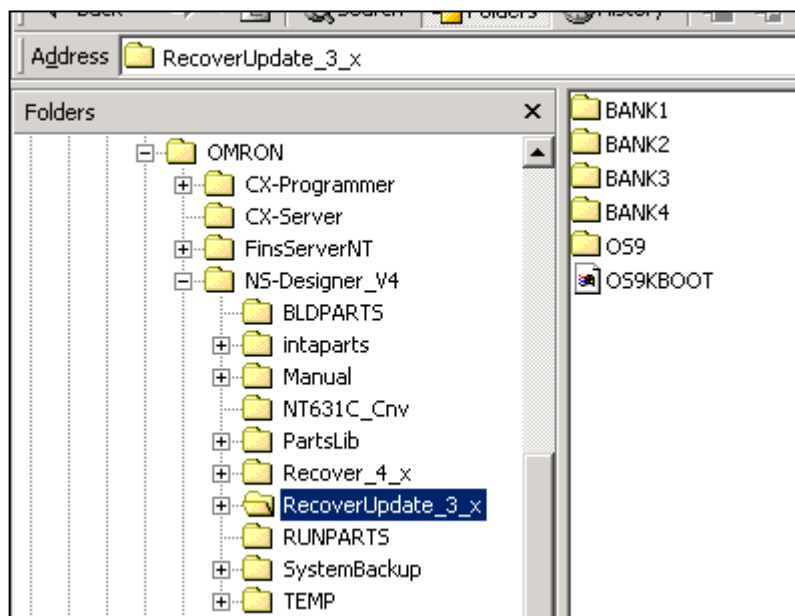
A Memory Card (30MB or over) is required to perform this program. Please prepare the Memory Card beforehand. Refer to the Section 5 for details on using a Memory Card.

<Overview of the Procedure>

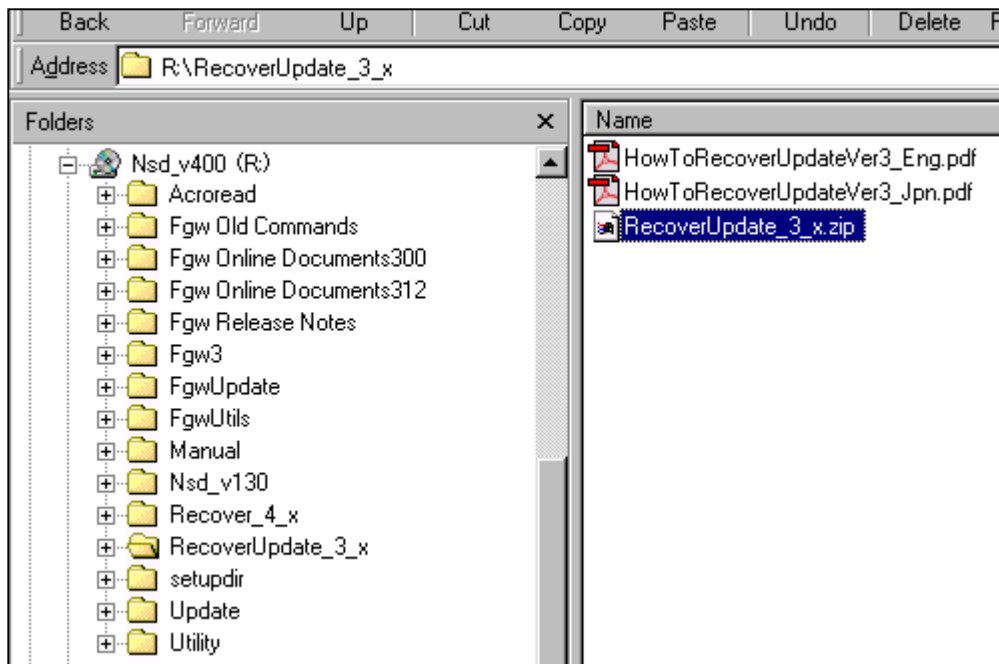
1. Copy this program to a Memory Card.
2. Place it in the PT and turn ON the power. The program for upgrading the system program is started automatically.

1.1 Step1: Copy the program to a Memory Card

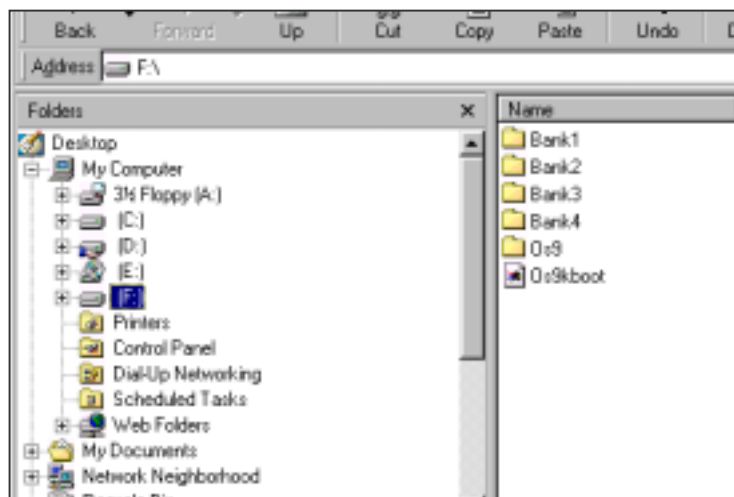
The program will be installed under the C:\Program Files\OMRON\NS-Designer_V4\RecoverUpdate_3_x as the default location when installing the NS-Designer Ver.4.



Also you can have the same directories structure mentioned above by extracting the compressed file in the CDROM (RecoverUpdate_3_x.zip shown below) with pathnames.



Copy all those modules under the root of the Memory Card.



Preparation completed. Safely remove your Memory Card from your personal computer.

1.2 Step2: How to place the Memory Card in the PT and execute the program.

1. Pull out all communications cable connected to the PT.
 2. Place the Memory Card in the PT.
 3. Turn ON the power to the PT.(If the power is already turned ON, turn OFF the power once, and turn On again.)
 4. The program will be started approx. 15 seconds later.
- The PT does not recognize the Memory Card if the program is not started. Check whether the Memory Card is placed in the connector. Refer to the Section 5 for details.

2. Process for Updating the System Program

This section describes procedures for updating the system program. The image samples of the PT are the same as NS10.

<Updating process>

1. Formatting the system program area
2. Formatting the screen data area
3. Downloading the system program Ver.3.0x
4. Downloading the operating system Ver.2.0x
5. Initializing the log

NOTE

Do NOT turn OFF the power while executing the program.

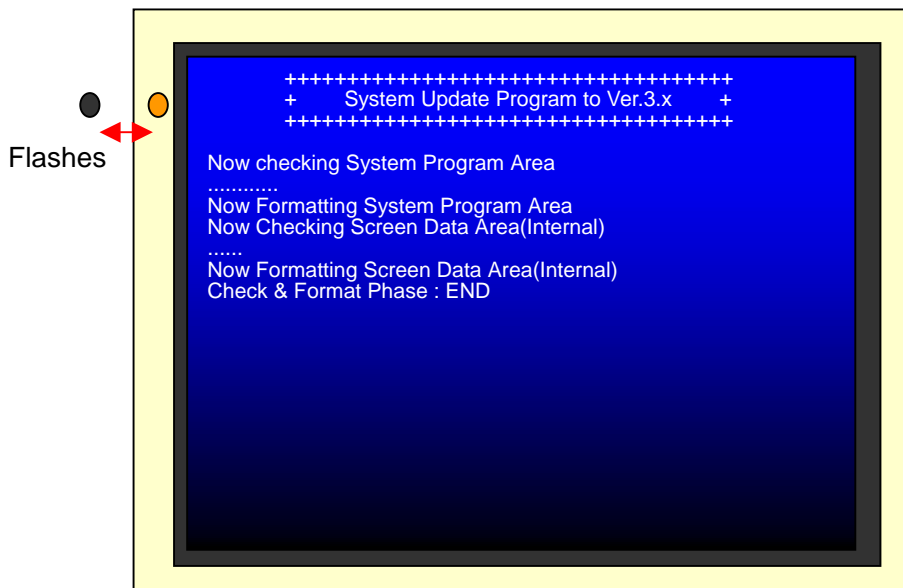
<Reference for executing the program>

	With an expansion memory(16MB)	Without an expansion memory
NS12/10	12 min.	7 min.
NS7		2 min.

2.1 Formatting the System Program Area

The indicator flashes in orange after starting the program. Then, the following actions are shown.

Displaying the title of the program, checking the system program area, and formatting the system program area.

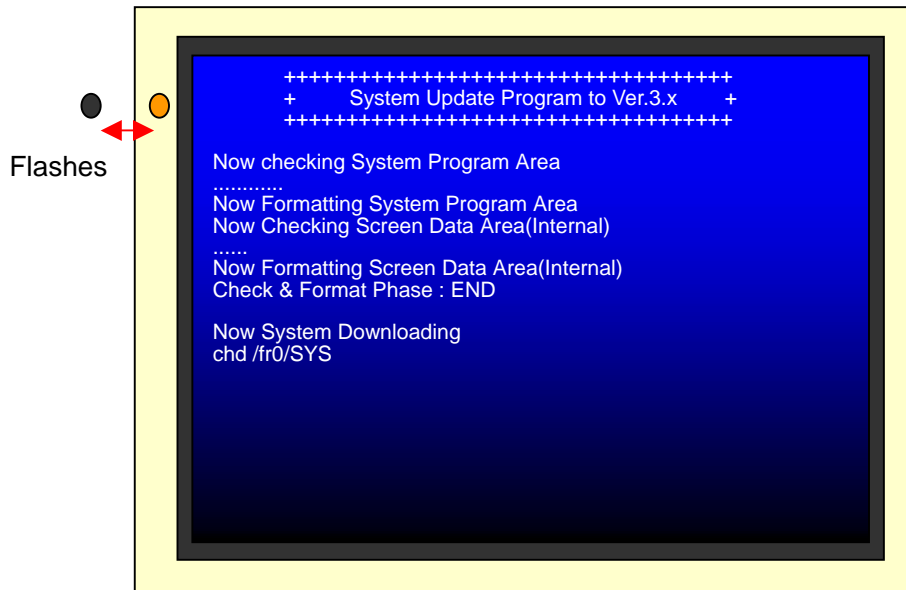


2.2 Formatting the Screen Data Area

Formatting the screen data area is performed after formatting the system program area. Next performs to format the expansion memory if it is installed in the PT. "Check & Format Phase: END" will be displayed after all the areas are checked and formatted.

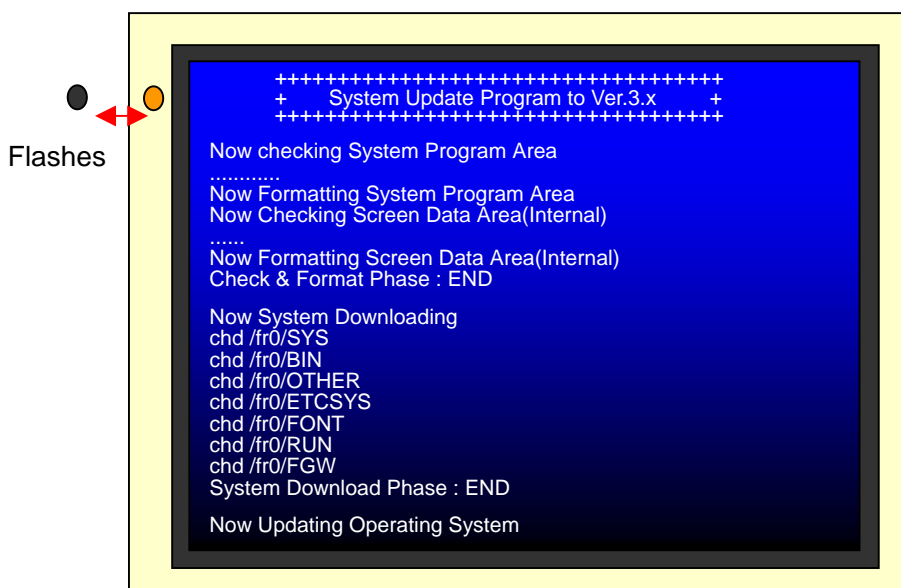
2.3 Downloading the System Program

Starts downloading the system program. "System Download Phase: END" will be displayed when downloading has been completed.



2.4 Downloading the operating system

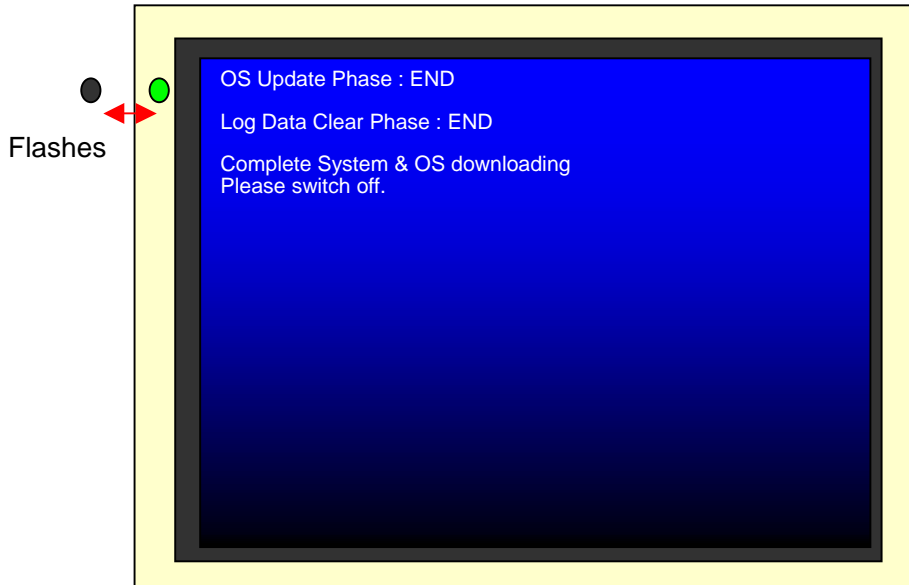
Starts downloading the operating system. "OS Update Phase: END" will be displayed when downloading has been completed.



2.5 Initializing the Log

Initializing the log is completed immediately and “Log Data Clear Phase : END” is displayed. The indicator flashes in green, and “Complete System & OS downloading” and “Please switch off” will be displayed when the operations has been completed normally.

Turn OFF the power to the PT and **REMOVE the memory card**.

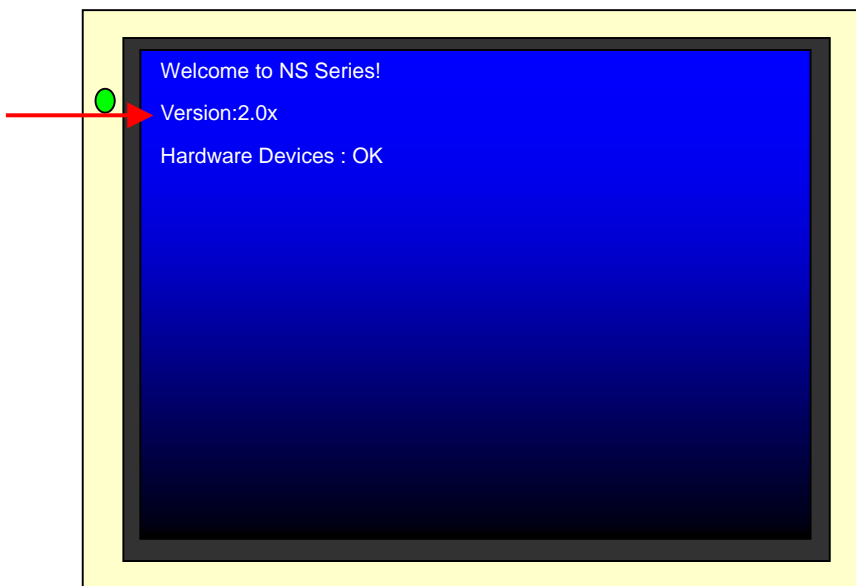


3. Confirmation after Updating

REMOVE the memory card and turn ON the power to the PT after terminating the program.

Please check the points as shown below.

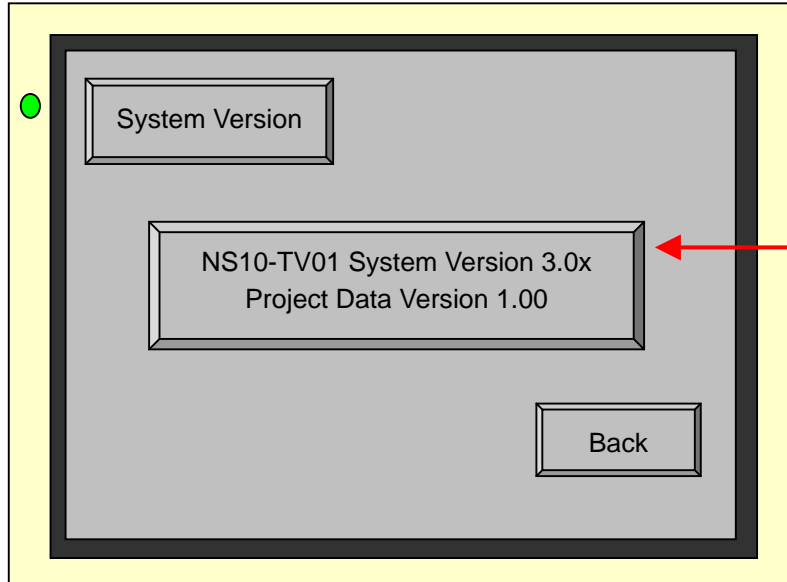
3.1 The Version of Operating System



As the image above shows, the version of system program is displayed in the second line after turning ON the power. Check whether the version is changed to 2.0x.

3.2 The Version of System Program

Go to the system menu and select System Version in the Special Screen tab. Check whether it shows Version 3.0x.



4. Troubleshooting

The possible error symptoms while executing the program and countermeasures are described .

Symptom	Cause	Countermeasure
The indicator flashes in red./ERROR is displayed.	Failed to any of the following actions: formatting, downloading the system program, downloading the operating system, or initializing the log.	Execute all over again after checking whether the memory card is corrupted on a computer.
The indicator flashes in orange for long time and does not change.	The system becomes unstable.	Check weather the conditions such as power supply, noise, or temperature are appropriate. Execute all over again after checking whether the memory card is corrupted on a computer.
	Started up the upgrading program while communicating with PLC.	Pull out all the communications cable from the PT and execute all over again.
The indicator turns to orange but nothing is started.	The memory card is not recognized.	Copy the program to another memory card and execute the program. Refer to the Section 5 About Memory cards for details.
	Recovery program for the PT with-V1 at the end of the model number(Recover_4_x) is executed.	Recover_4_x does not operate in the PT without -V1 at the end of model number. Copy an appropriate program(RecoverUpdate_3_x) to a Memory Card and execute it again.

5. About Memory Cards

5.1 How to Format a Memory Card

To use this program to update or recover your PT , do not format a memory card on a computer that Windows2000 SP2 or later, or Windows XP is installed. Programs cannot be read and execution cannot be completed normally.

This symptom is caused by changing specification of operation system on the computer to support large capacity hard disk.

5.2 How to Choose the Memory Card

Use one of the following Memory Cards recommended by OMRON for NS12/10 and NS7 with lot number 0852 and later (shipped at the beginning of May , 2002).

HMC-EF371/EF372/EF571/EF672

HMC-EF372/EF672 are now available on the market cannot be used for NS7 with lot number earlier than 0852 (shipped at the beginning of May , 2002). Please contact your nearest OMRON representative if you are using NS7 with lot number earlier than 0852.

The following behaviors have been detected when using a Memory Card which is NOT recommended by OMRON.

The following two problems have been detected for NS12/10/7 with lot number earlier than 1332(shipped at the middle of March,2002).

However, NS 12/10/7 with lot number 1332 and onward have no such problems.

The following case occurred when using memory cards besides above-mentioned.

1. A compact flash with blue label made by Sandisk on the market.

Place it in the NS7 and turn ON the power. The indicator stays in orange and the program does not start up with no display.

This symptom is caused by changing the characteristic(e.g. timing) of a memory card as a result of changing product lineup of Sandisk on October 2001.

2. A memory card made by Hitachi shipped before December 2001.

Place it in the NS12/10/7. The indicator stays in orange and may not start up with no display.(The memory card will not operate normally.)

This symptom is caused that information to manage or control the memory card by itself is deleted occasionally.