

FinsGateway

Toolbus Support Module User's Manual

First Version

December 1999

OMRON Corporation

CONTENTS

1 Introduction	3
2 Necessaries	3
3 Settings	3
3 - 1 Run FinsGateway Network Navigator	3
3 - 2 Run serial unit properties.....	4
3 - 3 Setup serial unit properties.....	4
3 - 4 Run serial explorer	5
4 Caution	8

©Copyright OMRON Corporation 1995,1996-1998,1999 All Rights Reserved.

FinsGateway was developed using Microsoft Visual C++ Version 5.0 and Version 4.1, Borland Delphi Version 2.0, and Microsoft FrontPage98.

Copyrights of the FinsGateway manual and software are owned by OMRON Corporation, except the following items.

FinsGateway is released containing the following items copyrighted by Microsoft Corporation. These are: ATL.DLL; MFC42.DLL; MSVCRT.DLL; MSVCP50.dll; and OLEAUT32.dll. These modules included in FinsGateway are redistributed based on a license agreement between Microsoft Corporation and OMRON Corporation. Under this license agreement, these modules cannot be distributed by the customer.

FINS and FinsGateway are trademarks of OMRON Corporation.

Microsoft, Windows, WindowsNT, and Visual C++ are registered trademarks of Microsoft Corporation.

Pentium and Intel are registered trademarks of Intel Corporation.

IBM is a registered trademark of International Business Machines Corporation.

All corporate names and product names mentioned in this manual are trademarks or registered trademarks of each company.

The symbols TM and ® are omitted in this document.

1 Introduction

This manual showed how to do FINS communication by using SYSMAC C or CV series tool bus. Even when all host link ports are occupied, you can do FINS communication temporarily by using tool bus.

2 Necessaries

Connection cables: Tool bus cable: SYSMAC C series(CQM1-CIF01, CQM1-CIF02)
SYSMAC CV series(CV500-CIF01)

FinsGateway V2 runtime, or Embedded Edition

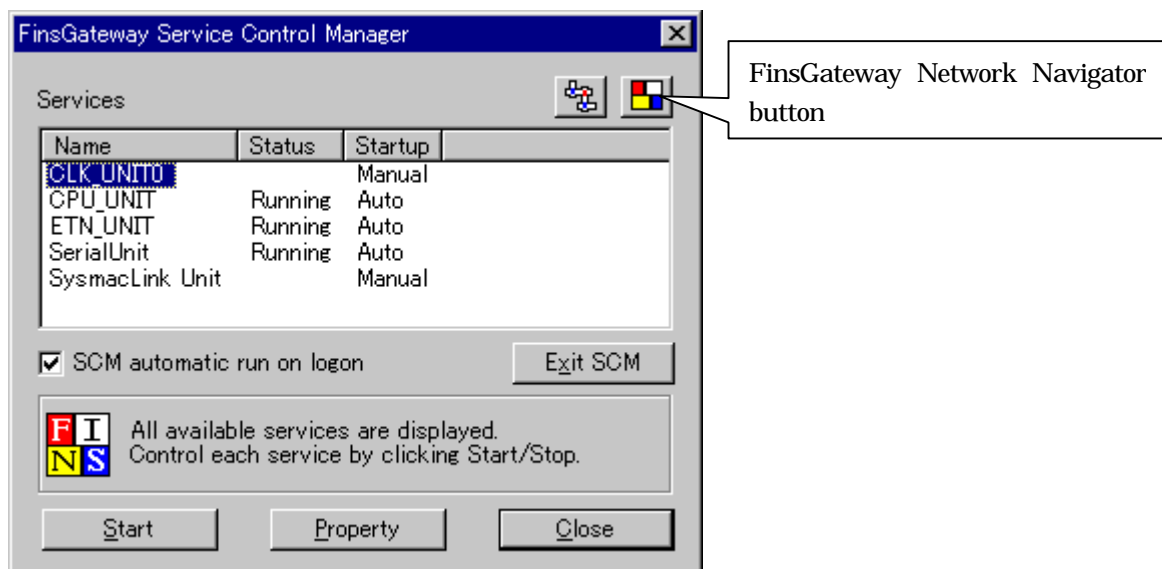
FinsGateway V2 Option Pack

3 Settings

For the purpose of doing FINS communication by using tool bus, settings are following process.

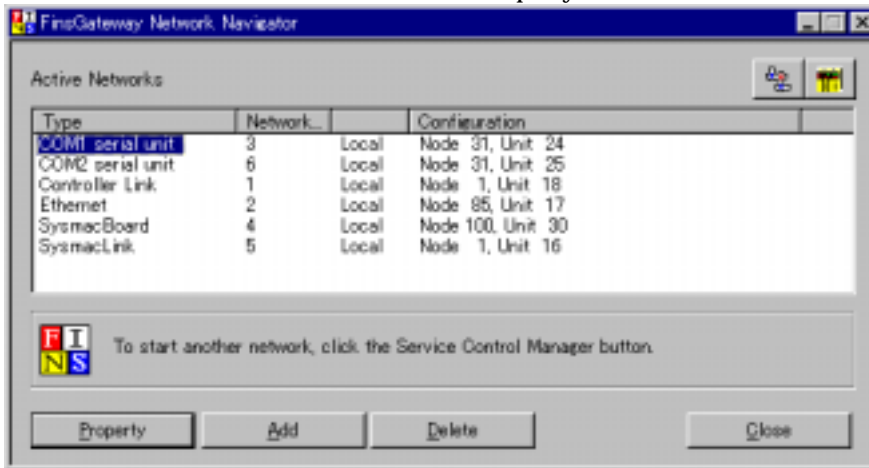
3 – 1 Run FinsGateway Network Navigator

Click on the Start | Programs | FinsGateway | FINS network settings, or click on upper right of FinsGateway Network Navigator button on FinsGateway Service Control Manager(SCM).



3 – 2 Run serial unit properties

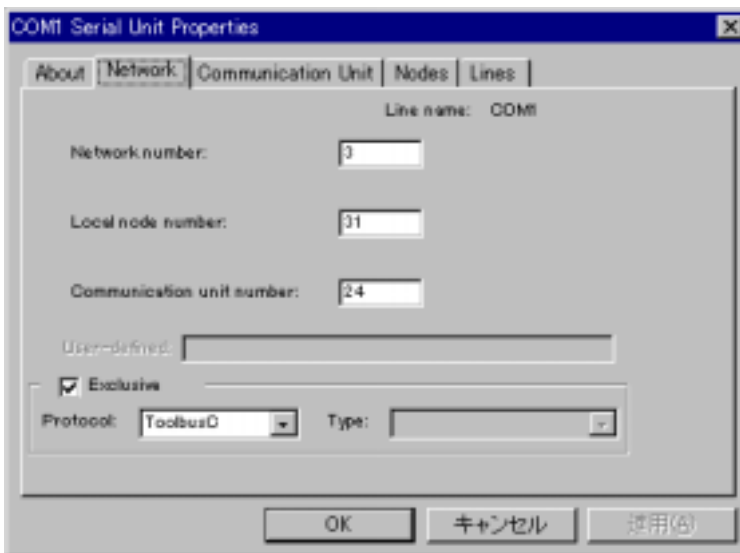
It clicks on COMx serial unit, and click Property button.



The serial unit properties are indicated in each COM port.

3 – 3 Setup serial unit properties

Click on the “network” tab.



Display the serial unit network properties.

The Exclusive check box and the protocol combo box are added in the bottom of the screen. When checked exclusive and select protocol, an appropriate port is occupied with the tool bus protocol.

At this time, establishment with the “node” tab is ignored.

Remove the check of Exclusive when you want to use it with the host link(SYSWAY), SYSWAY-CV, or CompoWay/F.

3 – 4 Run serial explorer

Start the serial explorer.

Click on the Start | Programs | FinsGateway | serial explorer, or click the explore button on serial unit settings “node” tab.

If serial unit was running when serial explorer was starting, the following dialog is indicated.



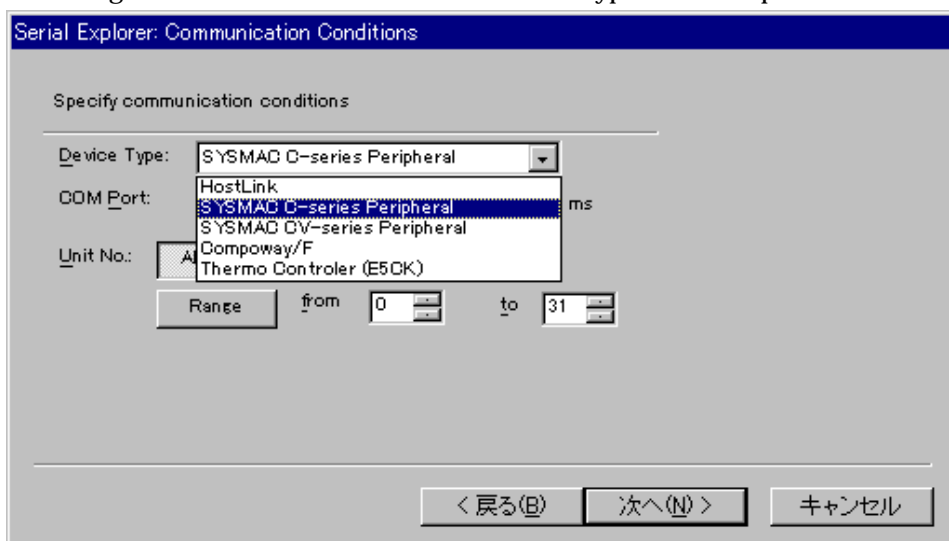
Click yes button when you want to establishment.

Serial explorer is started. You can do serial settings with wizard form.



Select “Automatic explore” and click Next button.

Next setting is communication conditions. Set device type and COM port.



Select SYSMAC C-series Peripheral or SYSMAC CV-series Peripheral at Device type.

Select COM port, which connected peripheral cable.

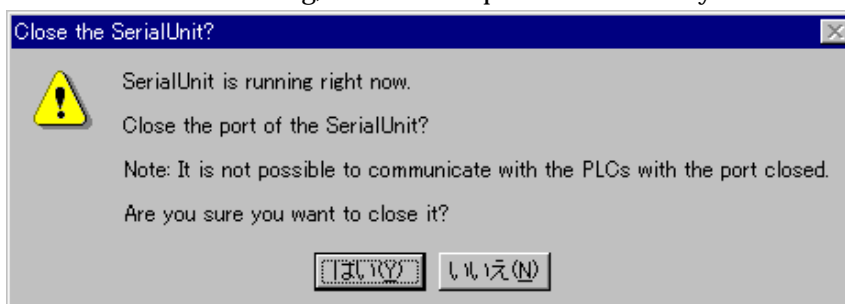
Click Next button.

Next setting is Exploring Device.



Click explore button and start to explore communication conditions.

If the serial unit is running, confirm to stop serial unit. Click yes button and go to next.

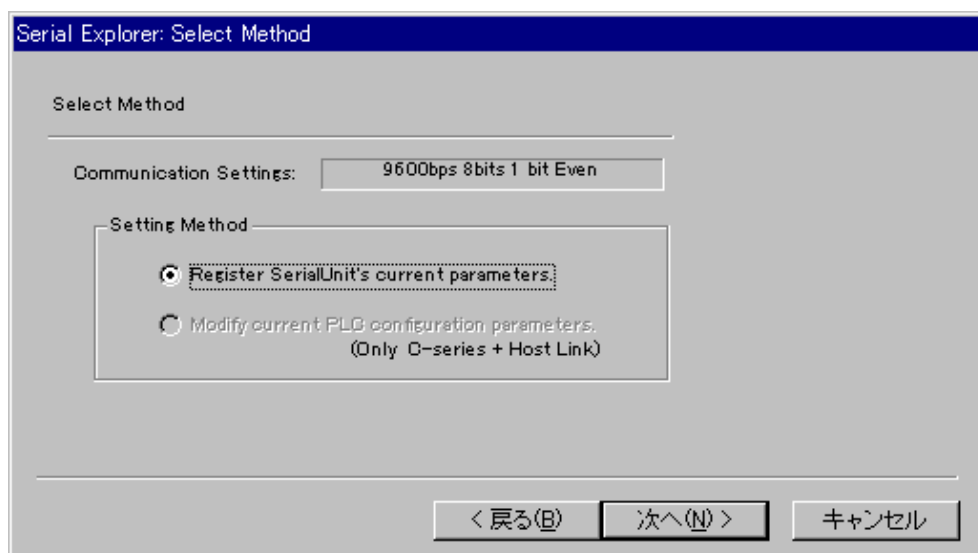


If it indicates the “communication conditions”, the reference of the communication condition is completed as follows. In this case, you may click stop button.



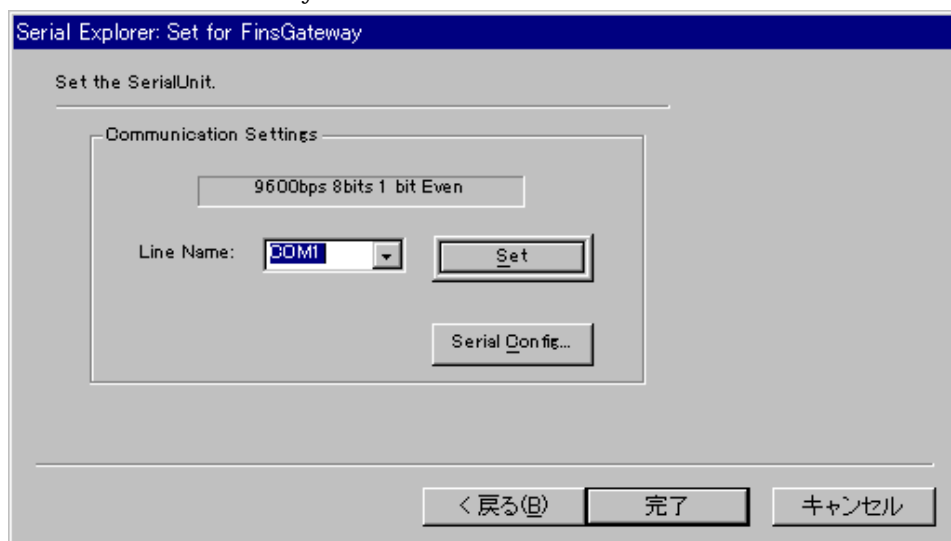
Click Next button.

Next is "Select Method". A detected communication condition is indicated.



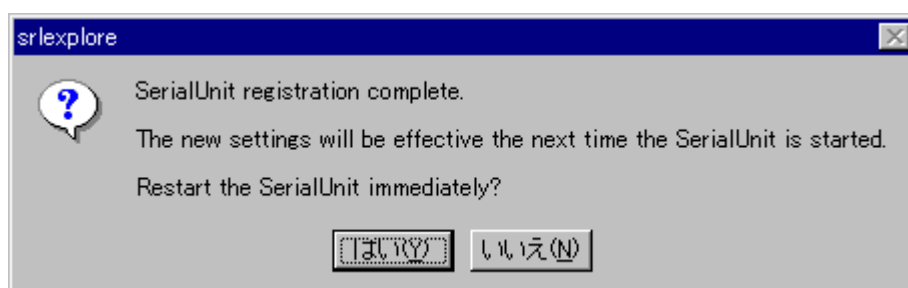
Click Next button.

Next is "Set for FinsGateway".



Confirm the communication conditions, and click the finish button.

The following dialog is indicated.



when click the yes button, a communication conditions are written in registry, and re-start the serial unit.

Click "serial config" button, you can confirm the serial settings.

And click the finish button, and exit the program

4 Caution

It can not communicate with PLC any more, when a cable is removed when FinsGateway is used by tool bus connection. Do the re-establishment of the serial communication conditions by using "Serial explorer" in this case.