



Server Lite

*A look through your Office Windows
onto the plant floor*



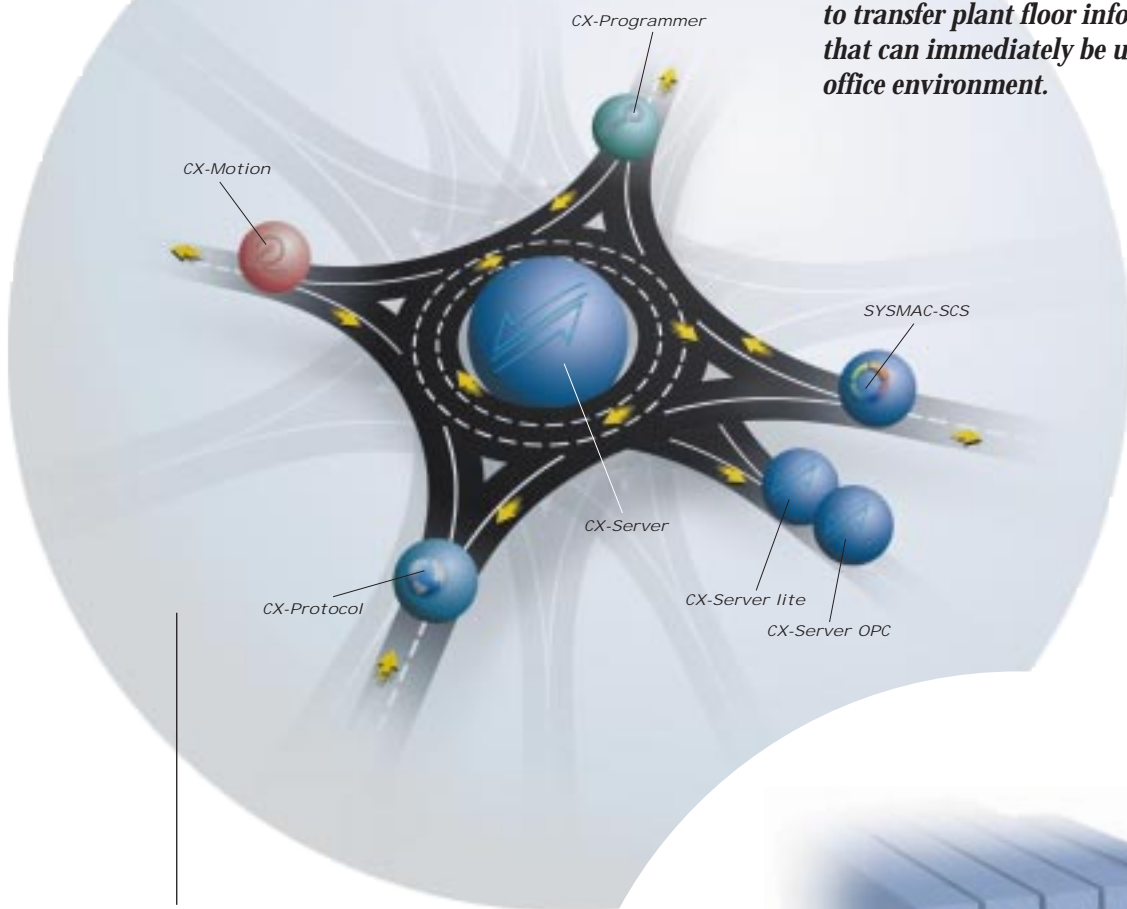
Adaptivity

On the road ahead, into the Third Millennium, manufacturing industries will be challenged by a growing global economy. In order to survive, grow and compete, manufacturers must be able to adapt their production processes to changing market conditions more rapidly than ever before.

Omron has developed a software suite that will enable manufacturers to meet this challenge. The Omron CX Automation Suite has been designed to dynamically evolve and accommodate any implementation, improvement, adaptation or extension to any kind of control or data acquisition within the manufacturing industry. The CX Automation Suite offers the one requirement that is needed to constantly optimise manufacturing processes. We call it Adaptivity.

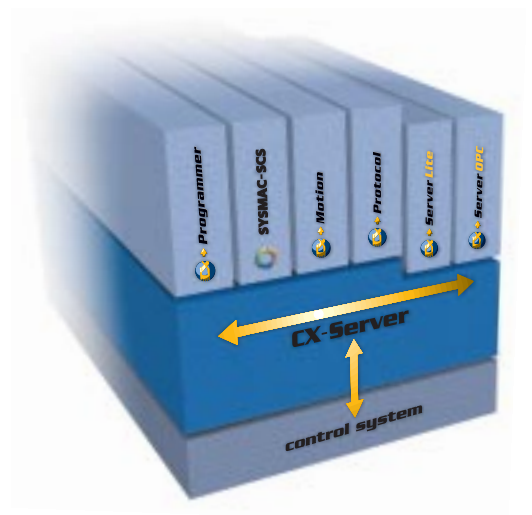
CX-Server Lite

CX-Server Lite is one of the server programs in the CX Automation Suite. CX-Server Lite applies open standards such as ActiveX® en COM to transfer plant floor information that can immediately be used in the office environment.



'Adaptivity':

The intrinsic ability
of systems to adapt
rapidly to change.



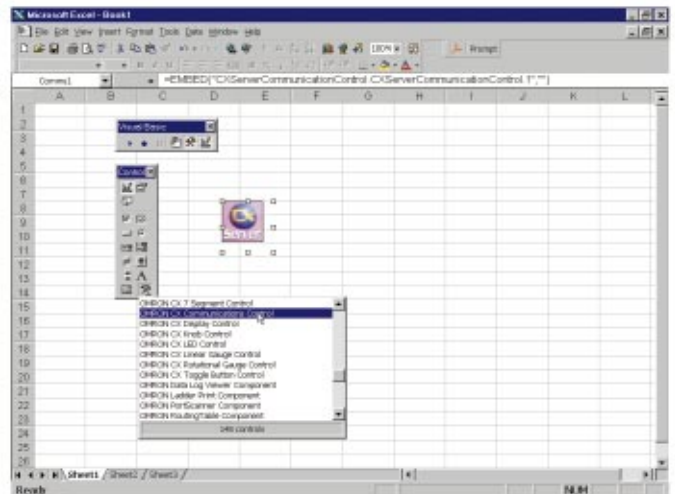
Not a single line of code required

How to create a machine-linked screen in a Windows Office application in four simple steps.



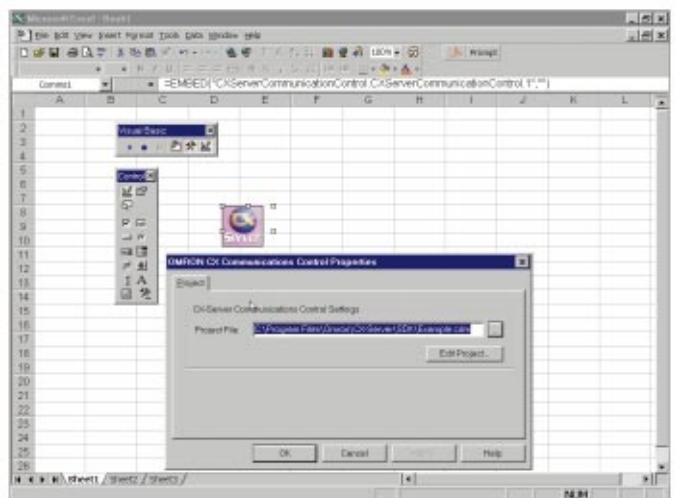
Drag and drop the communication component

The communication package is started automatically, when leaving the design mode.



Set the properties of the communication component

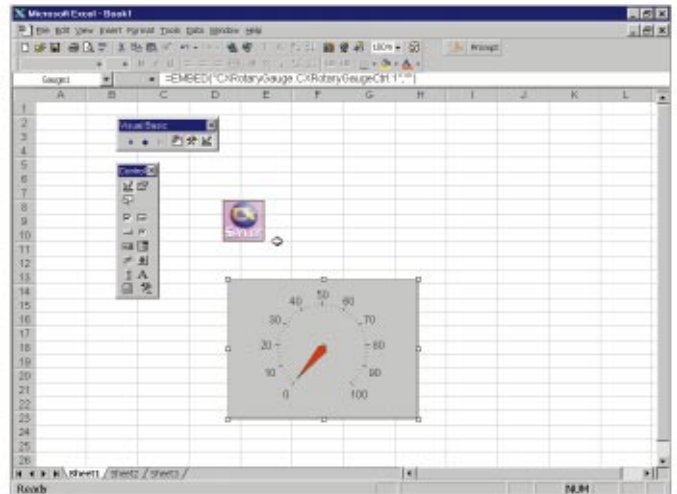
Link the communication component to a .CDM file. The .CDM file is present in the control system files. It enables the user to access any process parameter by its tag name such as 'Oil Tank Pump', instead of a meaningless code that requests more programming knowledge.



3

Drag and drop a graphic interface component

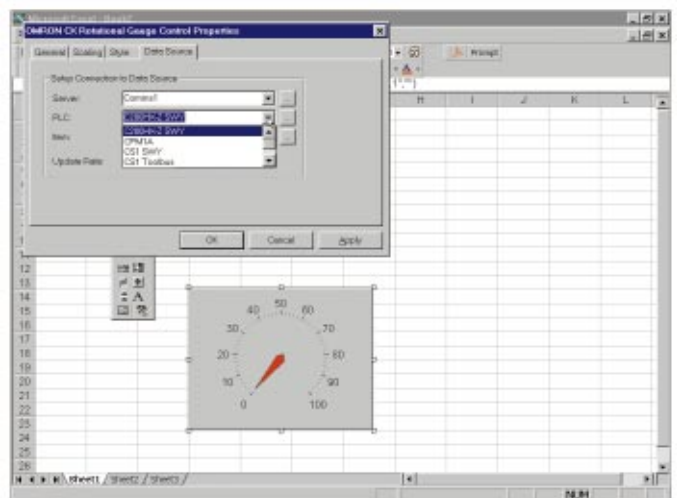
To visualise a process parameter it can be linked to a graphic interface component. Simply 'drag-and-drop' the component on your worksheet .



4

Set the properties of the graphic interface component

Link the component to the desired process variable. The process variable can be selected from a list by using its tag name. The properties box of the graphic interface component allows you to set the appearance to fit your requirements.



For every scale of application

CX-Server Lite fits every size of operation. Applications may be as sophisticated or as simple as required. With CX-Server Lite, all you need to do is drag, drop and click to obtain powerful live data of your plant in the Windows environment of your information system. Being a part of the CX Automation Suite you are assured of full transparency of information, as far down as the level of PLCs.

More information

Please call your nearest Omron representative for more information. You will find the telephone numbers of Omron offices throughout Europe in this brochure.



Look through your Office Windows onto the plant floor

People have become familiar with the easy functionality of software in the business environment. This software is mainly built around Microsoft standards. CX-Server Lite has been developed to enter factory data into this environment. It achieves seamless data transfer, converting data into information that can be understood and used in your business processes. By applying open standards such as ActiveX® and COM, CX-Server Lite makes these data available as information that can be processed by users with programs they are familiar with, e.g. Microsoft Excel and Access.

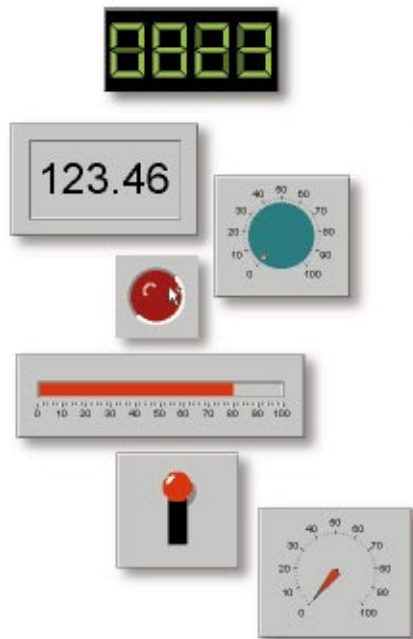


Simple and low cost implementation for real-time data flow

CX-Server Lite is designed as an ActiveX® control, which is an add-on function to Microsoft Windows applications such as Excel or Visual Basic. By adding CX-Server Lite into Excel, for example, live data can be updated directly into a cell or range of cells on the spreadsheet. No need for special programming skills. Just use your existing Excel program.

Graphic interface components included

To let you make a start right away, Omron included a set of graphic interface components. These components can be dragged and dropped in to the worksheet of any Active-X® container. Because you can directly link them to a process variable selected from a list, no programming of any code is required.





OMRON EUROPE B.V. - Wegalaan 67-69 - P.O. Box 13 - 2130 AA Hoofddorp - The Netherlands - Phone: +31 23 568 13 00 - Fax: +31 23 568 13 88 - www.eu.omron.com

Austria
+43 1 801900

Denmark
+45 4344 0011

Germany
+49 2173 680 00

The Netherlands
+31 23 568 1100

Portugal
+351 21 942 94 00

Switzerland
+41 41 748 1313

Belgium
+32 2 466 2480

Finland
+358 9 5495 800

Hungary
+36 1 350 9532

Norway
+47 22 65 7500

Spain
+34 91 377 7900

Turkey
+90 126 326 2980/1/2

Czech
+42 0 2 6731 1254

France
+33 1 49 74 70 00

Italy
+39 02 32 681

Poland
+48 22 645 78 60

Sweden
+46 8 632 3500

United Kingdom
+44 208 450 4646